

Elevating Work Platform in Workshop Pit

The Elevating Work Platform (EWP) is a custom-designed work platform fitted to an existing or new pit. The platform is hydraulically driven and controlled by a hand-held remote. This innovative design is based on the reliable cable suspension system.

Proven to increase efficiency & productivity

- ▶ Quickest access to vehicle undercarriage.
- ▶ Reduces fleet downtime as service crew can access vehicle at different levels simultaneously.
- ▶ Platform adjusts quickly to ideal height using hand-held remote transmitter while on the job.
- ▶ Tool boxes and equipment can accompany mechanic on the platform.



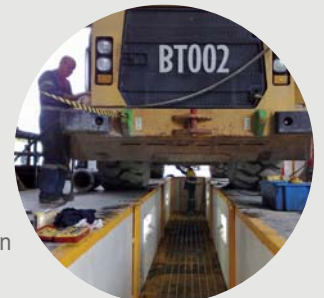
Reduce workplace hazards

- ▶ Pit safely covered at ground level when not in use.
- ▶ No obstructive equipment required for platform operation, reducing trip hazards.
- ▶ No jacks or stands required eliminating collapse hazards.
- ▶ Heavy and awkward machinery stays safely on the ground.



Improve mechanic posture and comfort

- ▶ Variable height adjustment to suit undercarriage of any vehicle and mechanic.
- ▶ Prevents worker strain injuries and discomfort.
- ▶ Improves facilities and conditions attracting staff and boosting retention.



Versatile

- ▶ Suits any fleet types especially those with large variation in vehicle type, size and height.
- ▶ Suits forklifts, lawn mowers, dump trucks, mining machinery, road trains hitched with trailers and more.
- ▶ Increases workshop floor space when pit not in use.
- ▶ Each EWP is designed and engineered to suit each workplace and their specific requirements.



Safe and reliable

- ▶ Multiple safety features within the cabling, hydraulic and electrical systems.
- ▶ Comprehensively tested in various workplace environments throughout Australia.

Cost efficient

- ▶ Low maintenance with readily available components.
- ▶ Simple to operate with minimal training.
- ▶ No certification required for in-house maintenance.
- ▶ Long life asset, very economical to recondition.



Evolving Workshop Technologies Pty Ltd
ABN 99118297902

- ☎ 1300 554 171
- ✉ info@ewtplatforms.com
- 🌐 ewtplatforms.com
- 📍 PO Box 351 The Gap Qld 4061

Focused on delivering practical improvements to workshop efficiencies



DESIGN & INSTALLATION

Platforms are individually designed to suit existing or new workshop pits and meet specific workshop requirements. Unlimited design options available, including shape, platform flooring and wet pit operations.

Accessories are designed or adapted to suit individual workshop applications.

Simple operation requires minimal training with no special certifications.



TECHNICAL SPECIFICATIONS

The EWP is based on a hydraulic-driven cable suspension system.

Each EWP is custom-designed and engineer-certified.

EWP Maximum Rated Capacity (MRC): 900kg standard, upgrades available if required.

Platform flooring: steel flat plate or grated material.

Platform frame height: standard 200mm/slimline 125mm.

Fabricated components: all surface treated.

EWP travel time unloaded (approx): 15 secs up/20 secs down.

Personnel access panels: 2 in platform floor to access pit base under EWP.

Access ladders: 2 swing-down ladders, built into underside of platform frame.

Ventilation fans: 2 installed into platform floor, auto activation/deactivation. Meets AS/NZS2430.3.2.2004 Classifications of Hazardous Areas, Class 1 Zone 2.

EWP voltage in pit: 24V.

Electrical control panel: 415V 3kW includes radio remote receiver, emergency stop, isolation switch, alternate controls for EWP.

Auto-activated switch circuit (activated by EWP): 3 relays available as standard. Utilise for lighting, ventilation fan etc.

Hydraulic pump: 415V 3kW positioned next to control panel.

Hand-held radio transmitter: Planna NBB (AS Category III, powered by 2 x AA batteries) or TeleRadio (AS Category II, powered by 3 x AAA batteries)



SAFETY FEATURES

Electrical

Circuitry designed and built to Australian Standards Category III AS4024 which dictates high quality components and emergency deactivation.

Hydraulic

Counter-balance valve on the hydraulic ram prevents platform from descending should a hydraulic hose fail. Valve also prevents hydraulic creeping.

Maximum Rated Capacity (MRC)

If platform MRC is exceeded, a controlled gradual descent of the platform is initiated to a height more appropriate to the load.

Platform support cables

Should a cable fail, the remaining cables are able to support the platform load as each cable is break-test rated to a load capacity 5 times that of the total MRC.

Activation of platform

Accidental activation of the platform is prevented due to the dual control circuitry (2 switches need to be pressed and held simultaneously).

Platform obstructions

- (1) Rope tension switches activate if any restriction is detected during platform descent eg objects in pit base.
- (2) Photo electric sensors detect presence of objects protruding past platform edge during ascent (optional).

Radio interference

If detected, the transmitter and receiver will automatically switch radio channels (AS CAT III) or deactivate platform (AS CAT II).

Alarms

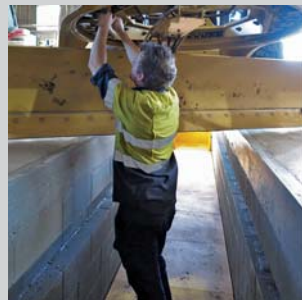
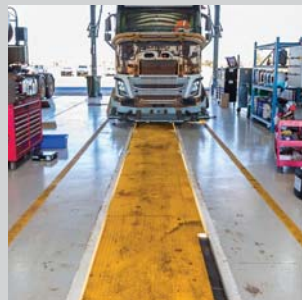
Two (2) alarms are activated when the hydraulic platform system is in use; an audible alarm and a flashing light.

All systems need to be operational for the platform to move.

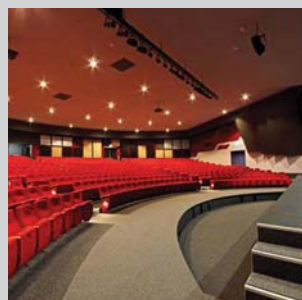
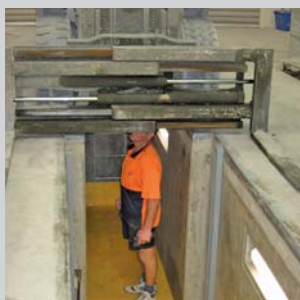
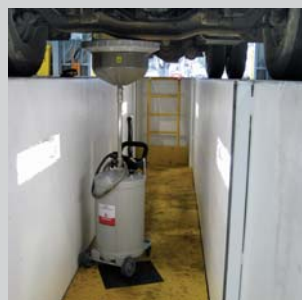
MAINTENANCE

Easy access to pit base via personnel access panel in platform with built-in drop-down ladder which also acts as a safety prop. Simple maintenance schedule with parts readily sourced from electrical, hydraulic and lifting gear suppliers. In-house maintenance scheduling and manuals are supplied.

VALUED EQUIPMENT in WORKSHOPS and ORCHESTRAS



Heavy Transport
Mining
Earthworks
Shires / Councils
Inspection Pits
Agriculture
Manufacturing
Distribution
Defence



ELEVATING WORK PLATFORMS

Customised for new and existing

- ✓ Mechanical Service Pits
- ✓ Orchestra Pits

and installed as standard equipment in our

- ✓ Prefabricated 'drop-in' workshop pits
- ✓ Redeployable workshop facility with service pit

PIT ACCESSORIES AVAILABLE

- ✓ Suspension shaker plates
- ✓ Brake roller testers
- ✓ Gearbox trolley jack
- ✓ Mobile steps
- ✓ Removable bridge and more.....